

## PRODUCT DATA SHEET

### Sphingomyelin

**Catalog No:** 1328

**Common Name:** SPM; Ceramide-1-phosphorylcholine

**Source:** natural, porcine RBCs

**Solubility:** chloroform, ethanol

**CAS No:** 85187-10-6

**Molecular Formula:** C<sub>47</sub>H<sub>95</sub>N<sub>2</sub>O<sub>6</sub>P

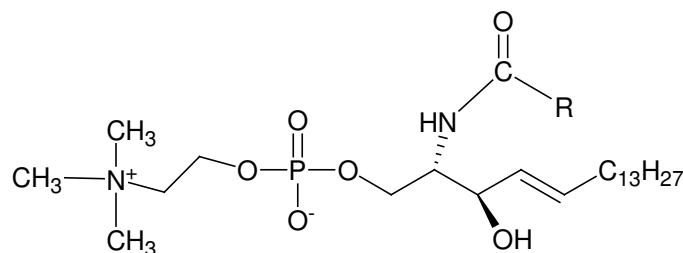
**Molecular Weight:** 815 (lignoceroyl)

**Storage:** -20°C

**Purity:** TLC > 98%; identity confirmed by MS

**TLC System:** chloroform/methanol/DI water  
(65:30:4 by vol.)

**Appearance:** solid



### **Application Notes:**

Sphingomyelin is found in mammalian cell membranes, especially in the membranes of the myelin sheath. It is the most abundant sphingolipid in mammals and is thought to be found mostly in the exoplasmic leaflet of the membrane although there is also evidence of a sphingomyelin pool in the inner leaflet of the membrane. It is involved in signal transduction and apoptosis.<sup>1</sup> An improper ratio of sphingomyelin to ceramide has been shown to be a factor in Niemann-Pick disease<sup>2</sup> and neonatal respiratory distress syndrome.<sup>3</sup> However, the ratio of sphingomyelin to ceramide is different for different cell types.<sup>4</sup> Sphingomyelin is an important amphiphilic component when plasma lipoprotein pools expand in response to large lipid loads or metabolic abnormalities.<sup>5</sup>

### **Selected References:**

1. R. N. Kolesnick, A. Haimovitz-Friedman, Z. Fuks "The sphingomyelin signal transduction pathway mediates apoptosis for tumor necrosis factor, Fas, and ionizing radiation" *Biochem Cell Biol.*, Vol. 72(11-12) pp. 471-474, 1994
2. M. Schmuth, et al. "Permeability barrier disorder in Niemann-Pick disease: sphingomyelin-ceramide processing required for normal barrier homeostasis" *J Invest Dermatol.*, Vol. 115(3) pp. 459-466, 2000
3. C. St Clair et al. "The probability of neonatal respiratory distress syndrome as a function of gestational age and lecithin/sphingomyelin ratio" *Am J Perinatol.*, Vol. 25(8) pp. 473-480, 2008,
4. J. Kilkus et al. "Differential regulation of sphingomyelin synthesis and catabolism in oligodendrocytes and neurons" *J Neurochem.* Vol. 106(4) pp. 1745-1757, 2008
5. N. Duan RD. "Absorption and lipoprotein transport of sphingomyelin" *J Lipid Res.*, Vol. 47(1) pp. 154-171, 2006

This product is to be used for research only. It is not intended for drug or diagnostic use, human consumption or to be used in food or food additives. Matreya assumes no liability for any use of this product by the end user. We believe the information, offered in good faith, is accurate.